



Article no.: M-2416

Product data:
**Behälter 12.000 Liter aus V4A,
einwandig,
Standing**

EUR 6.100,00

zzgl. 19 % MwSt. excl. shipping

in stock: 1

Location: 33378 Rheda-Wiedenbrück

Behälter 12.000 Liter aus V4A, einwandig consists of the material 1.4571(AISI316) V4A. The volume is approx. 12,000 litres.

Behälter 12.000 Liter aus V4A, einwandig was last used in the following area: Cosmetics.

1 pieces of Behälter 12.000 Liter aus V4A, einwandig is/are currently still available. Delivery can take place worldwide.

Product description

General

Material in contact with product 1.4571(AISI316) V4A

Volume approx. 12,000 litres

Structure Standing

DIN design unknown

Year of manufacture 2008

Manufacturer Schärf & Schall

Condition Used

Dimensions approx.

External diameter 2350 mm

Cyl. height 2750 mm

Foot height 645 mm

Outlet height 320 mm

Total height 3750 mm

Wall thickness of product chamber head 2,50 mm

Wall thickness of product chamber shell 2,50 mm

Wall thickness of product chamber floor 3,00 mm

Design

Weight approx. 1000 kg

Weight per unit volume approx. 1000 kg/m³

Insulation No

Interior surface Smoothed

Exterior surface Smoothed

Floor type Conical bottom

Head design Conical bottom

Product chamber operating pressure Atmospheric/unpressurised

Equipment

Temperature-controllable No

Agitator

Agitator unavailable

Supports

Supports Stainless steel feet
Number of feet 3 (piece)

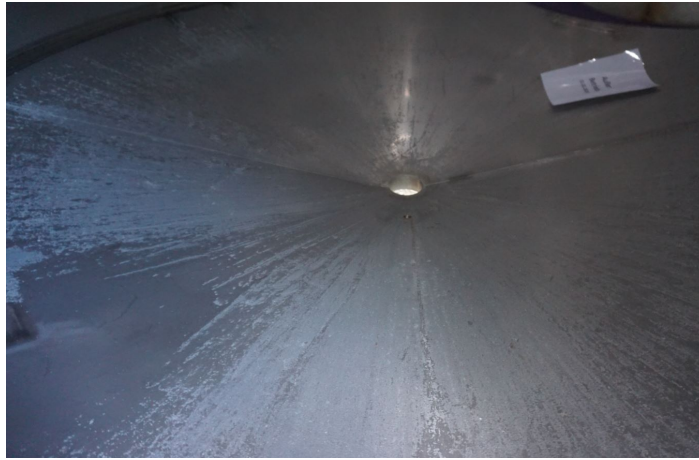
Fixtures and fittings

Mannloch 1 Größe 340x440 DN mm
Manway position In shell
Nozzles/connectors in head 2xDN50 1xDN65 1x1" (piece)
Outlet nozzle 100
Fixtures and fittings Sample taking
Additional fixtures and fittings Nameplate,

Other notices

Technical documentation Designation
Last usage Cosmetics

Pictures





Terms and conditions

The general terms and conditions of Georg Heuer Behälterhandel und Industriebedarf GmbH apply. [View here.](#)