

Article no.: M-2978



Product data:
**Behälter 30.000 Liter aus V2A,
einwandig, spez. Gew. 1,13 kg/l,
gebraucht,
Standing**

EUR 21.800,00
zzgl. 19 % MwSt. excl. shipping
in stock: 3

Location: 33378 Rheda-Wiedenbrück

Behälter 30.000 Liter aus V2A, einwandig, spez. Gew. 1,13 kg/l, gebraucht consists of the material 1.4301(AISI304) V2A. The volume is approx. 30,000 litres.

Behälter 30.000 Liter aus V2A, einwandig, spez. Gew. 1,13 kg/l, gebraucht was last used in the following area: Chemistry.

3 pieces of Behälter 30.000 Liter aus V2A, einwandig, spez. Gew. 1,13 kg/l, gebraucht is/are currently still available. Delivery can take place worldwide.

Product description

General

Material in contact with product 1.4301(AISI304) V2A

Volume approx. 30,000 litres

Structure Standing

DIN design unknown

Year of manufacture 1995

Manufacturer Hagemann

Condition Used

Dimensions approx.

External diameter 2500 mm
Cyl. height 5350 mm
Foot height 1450 mm
Total height 7100 mm
Wall thickness of product chamber head 5,00 mm
Wall thickness of product chamber shell 6,00 mm
Wall thickness of product chamber floor 5,00 mm

Design

Weight approx. 2650 kg
Weight per unit volume approx. 1130 kg/m³
Insulation No
Interior surface Matt
Exterior surface Matt
Floor type Torispherical bottom
Head design Torispherical bottom
Product chamber operating over-pressure 0,50 bar
Product chamber operating under-pressure -0,1 bar

Equipment

Temperature-controllable No
Operating temperature 100 °C

Agitator

Agitator quantity 1 (piece)
Agitator position At bottom at the side in shell
Agitator type Propeller

Supports

Supports Steel feet

Number of feet 4 (piece)

Fixtures and fittings

Mannloch 1 Größe 600 DN mm

Manway position In shell

Handhole 1 size 200 DN mm

Handhole position In head

Nozzle connector Flange

Nozzles/connectors in shell lt. Zeichnung (piece)

Nozzles/connectors in head lt. Zeichnung (piece)

Nozzles/connectors in floor lt. Zeichnung (piece)

Outlet nozzle 65

Fixtures and fittings Lifting lugs

Additional fixtures and fittings Nameplate,

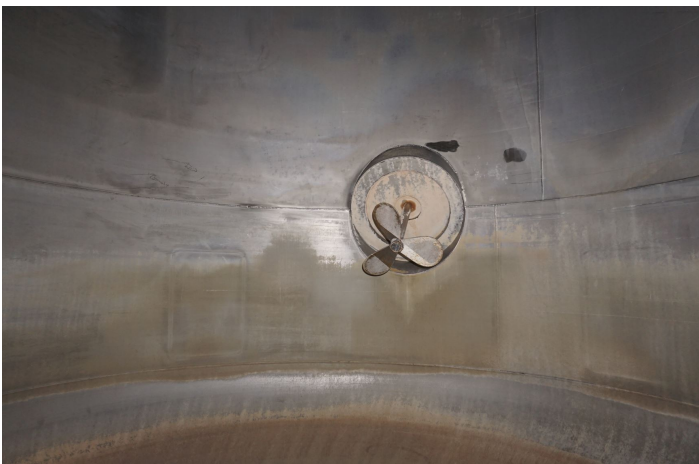
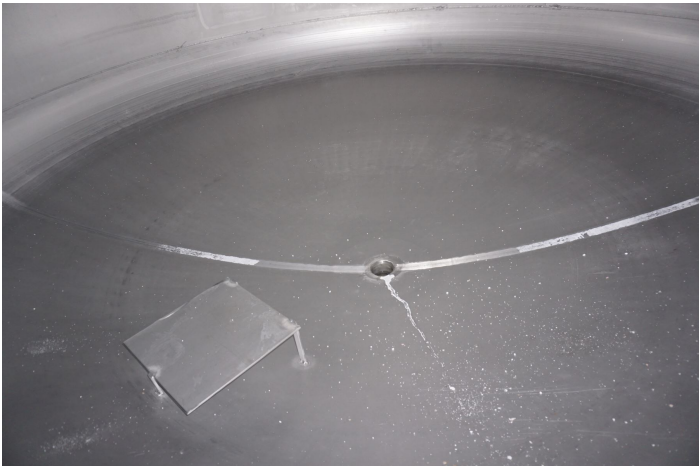
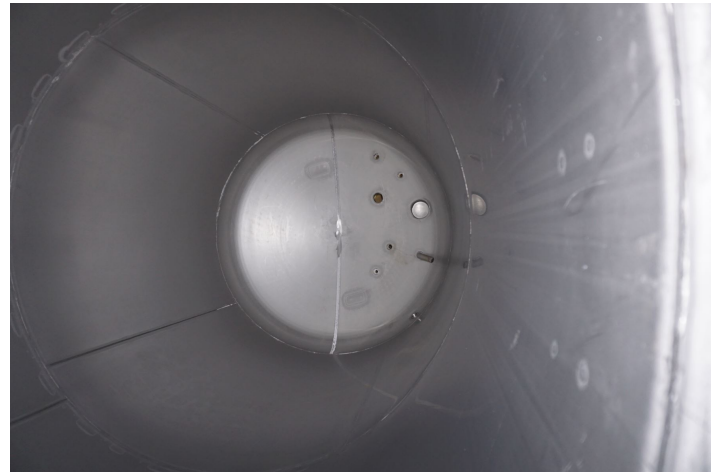
Other notices

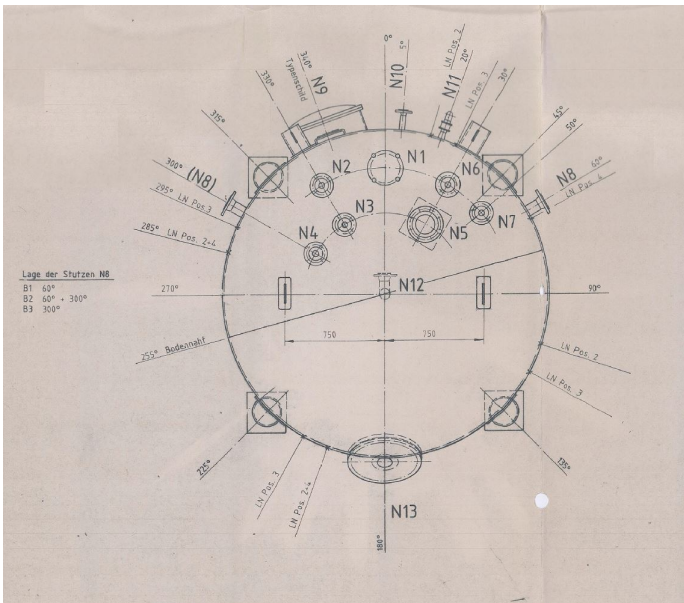
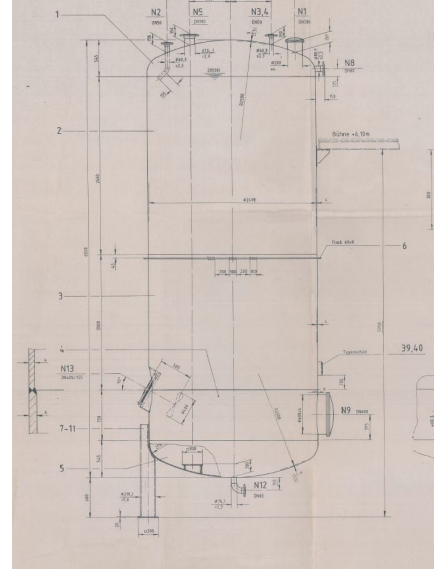
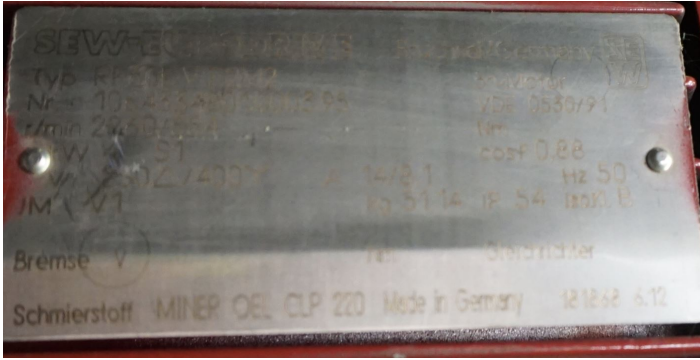
Technical documentation Designation

Note 3 baugleiche Tanks ohne RÄ¼hrwerk siehe Art. 2979

Last usage Chemistry

Pictures





Schauglasplatten	Borosilikatglas	7080/7081	/	St
Muttern	C35N	17240	W7	3.1B/St
Ringmuttern DIN 582	C15	17210	/	St
Schrauben	Ck35	17240	W7	3.1B/St
Muttern DIN 934	A2/A4-70	267-11	W2	3.1B/St
Schrauben DIN 931/933/938	A2/A4-70	267-11	W2	3.1B/St
Muttern DIN 934	5-2	267-14	W7	St
Schrauben DIN 931/933/938	X 5.6	267-13	W7	St
Flansche	C22.8	17243	W3	3.1B
Flansche	H 11	17155	W1/W5	3.1B/St
Flansche	R5L37-2	17100	W1/9/13	3.1B/St
Flansche	1.4301	17440	W2/W5	3.1B
Flansche	X 1.4541	17440	W2/W5	3.1B
Flansche	1.4571	17440	W2/W5	3.1B
Halbrohr (Blech)	1.4301	17441	W2	3.1B
Halbrohr (Blech)	1.4541	17441	W2	3.1B
Rohre DIN 2448	St37.0	17175	W4	3.1B/St
Rohre DIN 2463/2462	1.4301	17457/17458	W2 (PK2)	3.1B, s>5,6=3.1A/C
Rohre DIN 2463/2462	X 1.4541	17457/17458	W2 (PK2)	3.1B, s>5,6=3.1A/C
Rohre DIN 2463/2462	1.4571	17457/17458	W2 (PK2)	3.1B, s>5,6=3.1A/C
Bleche (Klopperrboden)	X H 11	17155	W1(HPB/1)	3.1B
Bleche (Klopperrboden)	R5L37-2	17100	W1(HPB/1)	3.1B
Bleche (Klopperrboden)	X 1.4301	17440/17441	W2(HPB/1)	3.1B, s>20=3.1A/C
Bleche (Klopperrboden)	1.4541	17440/17441	W2(HPB/1)	3.1B, s>30=3.1A/C
Bleche (Klopperrboden)	1.4571	17440/17441	W2(HPB/1)	3.1B, s>30=3.1A/C
Benennung und Bemerkungen	Werkstoff	Werkstoffblatt oder DIN	Pruefgrundl.	Guetenachweis

Terms and conditions

The general terms and conditions of Georg Heuer Behälterhandel und Industriebedarf GmbH apply. [View here.](#)