



Article no.: M-2823

**Product data:**  
**Wanne 2.500 Liter aus V4A, einwandig,  
gebraucht,**

EUR 2.100,00

zzgl. 19 % MwSt. excl. shipping

in stock: 3

Location: 33378 Rheda-Wiedenbrück

Wanne 2.500 Liter aus V4A, einwandig, gebraucht consists of the material 1.4571(AISI316) V4A. The volume is approx. 2,500 litres.

Wanne 2.500 Liter aus V4A, einwandig, gebraucht was last used in the following area: Foodstuffs.

3 pieces of Wanne 2.500 Liter aus V4A, einwandig, gebraucht is/are currently still available. Delivery can take place worldwide.

## Product description

### General

---

**Material in contact with product** 1.4571(AISI316) V4A

**Volume** approx. 2,500 litres

**Structure** Rectangular

**DIN design** unknown

**Condition** Used

### Dimensions approx.

---

**Cyl. height** 1500 mm

**Total height** 1700 mm

**Length** 1400 mm

**Width** 1300 mm

## Design

---

**Weight approx.** 500 kg

**Weight per unit volume approx.** 1000 kg/m<sup>3</sup>

**Insulation** No

**Interior surface** Smoothed

**Exterior surface** Smoothed

**Floor type** Flat

**Head design** Open

**Product chamber operating pressure** Atmospheric/unpressurised

## Equipment

---

**Temperature-controllable** No

## Agitator

---

**Agitator** unavailable

## Supports

---

**Supports** Stainless steel feet

**Number of feet** 4 (piece)

**Note on supports** höhenverstellbar

## Fixtures and fittings

---

**Nozzles/connectors in shell** 1xDN65 1xDN100 (piece)

**Outlet nozzle** 50

**Fixtures and fittings**

**Additional fixtures and fittings**

## Other notices

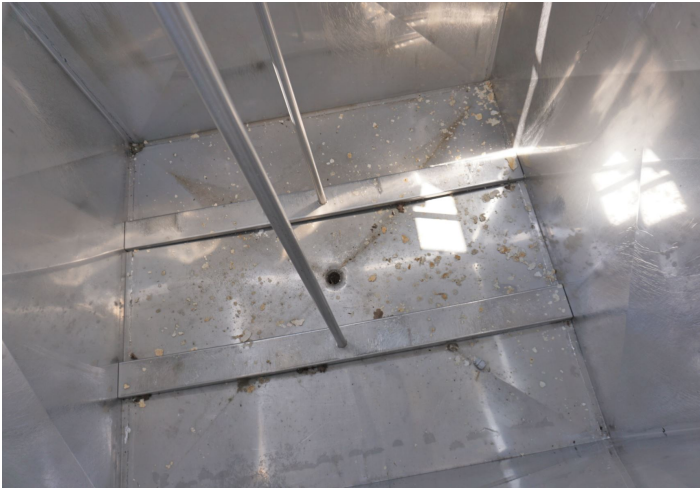
---

**Last usage** Foodstuffs



# Pictures









## Terms and conditions

The general terms and conditions of Georg Heuer Behälterhandel und Industriebedarf GmbH apply. [View here.](#)