



Article no.: M-3015

Product data:
Behälter 16.000 Liter aus V2A
temperierbar, gebraucht,
Standing

EUR 12.300,00

zzgl. 19 % MwSt. excl. shipping

in stock: 1

Location: 33378 Rheda-Wiedenbrück

Behälter 16.000 Liter aus V2A temperierbar, gebraucht consists of the material 1.4301(AISI304) V2A. The volume is approx. 16,000 litres. The diameter inside includes 2500 mm.

Behälter 16.000 Liter aus V2A temperierbar, gebraucht was last used in the following area: Foodstuffs.

1 pieces of Behälter 16.000 Liter aus V2A temperierbar, gebraucht is/are currently still available. Delivery can take place worldwide.

Product description

General

Material in contact with product 1.4301(AISI304) V2A

Volume approx. 16,000 litres

Structure Standing

DIN design unknown

Condition Used

Dimensions approx.

Internal diameter 2500 mm

External diameter 2620 mm

Cyl. height 3150 mm

Foot height 1230 mm

Total height 5400 mm

Design

Weight approx. 2000 kg

Weight per unit volume approx. 1000 kg/m³

Insulation No

Interior surface Smoothed

Exterior surface Smoothed

Floor type Torispherical bottom

Head design Torispherical bottom

Product chamber operating pressure Atmospheric/unpressurised

Equipment

Temperature-controllable No

Temperature control area Shell and floor area

Temperature control system Spray cooling

Temperature control system operating pressure/pipe chamber 0,0 bar

Agitator

Agitator quantity 1 (piece)

Agitator position At bottom at the side in shell

Note on agitator ohne Rührwerk, Anschluss mit Blinddeckel

Supports

Supports Stainless steel feet

Number of feet 6 (piece)

Note on supports höhenverstellbar

Fixtures and fittings

Manway position In shell

Outlet nozzle 50/65

Cleaning/CIP nozzle in head

Fixtures and fittings

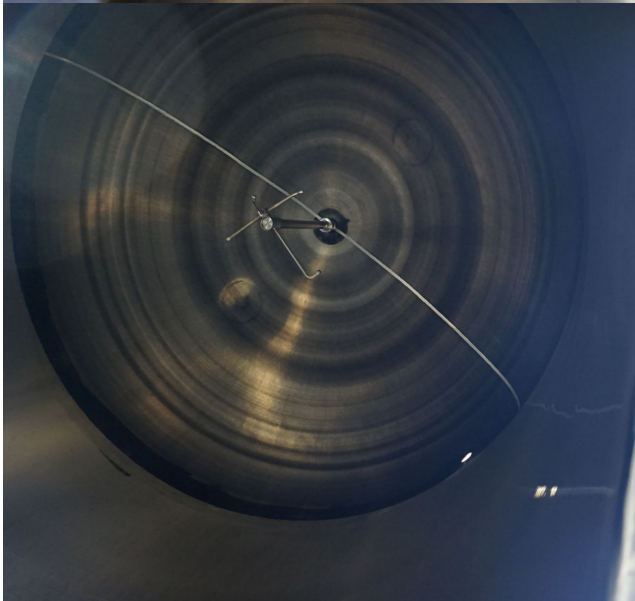
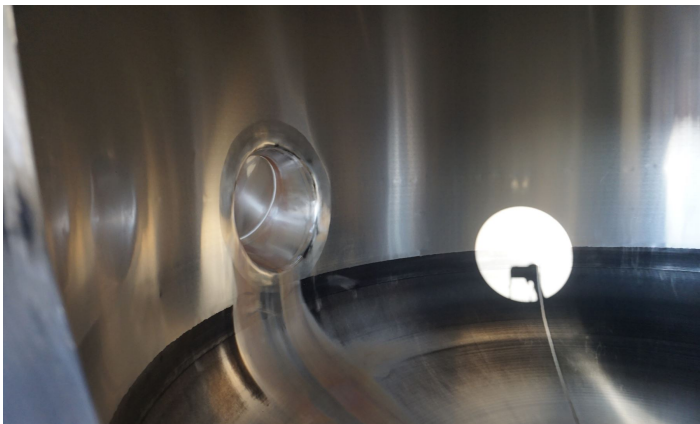
Additional fixtures and fittings

Other notices

Technical documentation None

Last usage Foodstuffs

Pictures





Terms and conditions

The general terms and conditions of Georg Heuer Behälterhandel und Industriebedarf GmbH apply. [View here.](#)