



Article no.: M-2411

Product data:
**Wanne 1.500 Liter aus V2A mit
Förderpumpe,**

EUR 3.900,00
zzgl. 19 % MwSt. excl. shipping
in stock: 1

Location: 33378 Rheda-Wiedenbrück

Wanne 1.500 Liter aus V2A mit Förderpumpe consists of the material 1.4301(AISI304) V2A. The volume is approx. 1,500 litres.

Wanne 1.500 Liter aus V2A mit Förderpumpe was last used in the following area: Foodstuffs.

1 pieces of Wanne 1.500 Liter aus V2A mit Förderpumpe is/are currently still available. Delivery can take place worldwide.

Product description

General

Material in contact with product 1.4301(AISI304) V2A

Volume approx. 1,500 litres

Structure Rectangular

DIN design unknown

Condition Used

Dimensions approx.

Cyl. height 450 mm

Total height 1820 mm

Length 1500 mm

Width 1500 mm

Design

Weight approx. 500 kg

Insulation No

Interior surface Smoothed

Exterior surface Smoothed

Floor type Cone

Head design Open

Product chamber operating pressure Atmospheric/unpressurised

Equipment

Temperature-controllable No

Agitator

Agitator unavailable

Supports

Fixtures and fittings

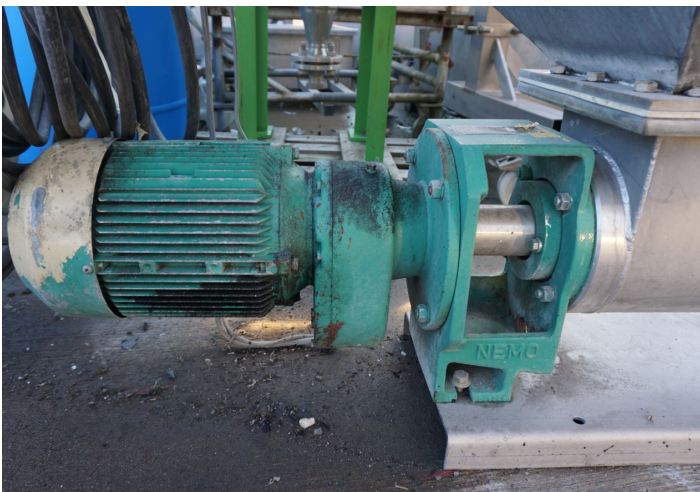
Fixtures and fittings

Additional fixtures and fittings

Other notices

Last usage Foodstuffs

Pictures





Terms and conditions

The general terms and conditions of Georg Heuer Behälterhandel und Industriebedarf GmbH apply. [View here.](#)